

Ashborough East Architectural Review Board

221 Brandywine Drive
Summerville, SC 29485

Phone/Fax : 843-821-1275

Locating Your Property Lot Pins to determine Lot Line Locations

When Westvaco surveyed and developed Ashborough East during the four phases of development (1980 – 1994), 1" diameter Lot Pins were driven into the ground at lot corners and along lot lines.

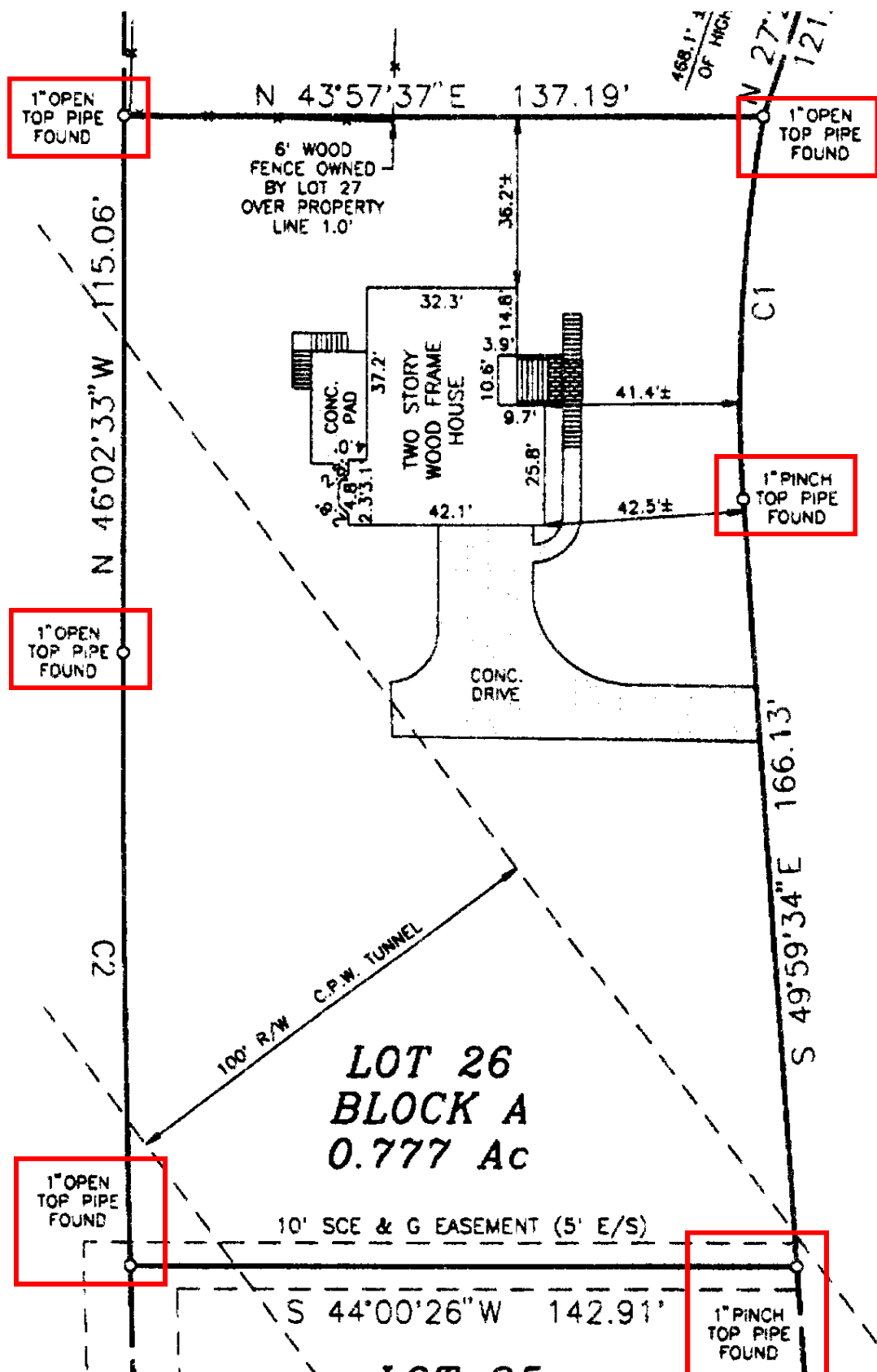
This is shown in the following two pages. The first page illustrates how lot pins are shown on property plats done by surveying companies, and the second page includes photographs of an actual corner lot pin.

If you do not have a survey plat of your property, you can determine your lot line locations by locating these pins. They may be covered by turf or earth. In such cases, you may wish to carefully dig to locate them, or use a metal detector to find them.

Fences and any additions to your property or house, such as outbuildings, patios, pools, play structures, etc., must be no closer than distances specified in the Ashborough East Covenants and guidelines.

For this reason, lot lines must be identified as condition for submitting an ARB application for the location of any construction (as noted above and as per the Covenants and guidelines) which is determined by lot line location.

Your co-operation in identifying lot lines for the purpose of ARB application and review requirements is appreciated.



Example of Typical Property Plat
showing Lot Pin locations (red outline)



Photos of typical
Lot Corner Pin
for properties in
Ashborough East